



2014 Annual Disability Statistics Compendium

December 3, 2014



Disability Statistics & Demographics
Rehabilitation Research & Training Center



Introduction

- Welcome to the release briefing of the Sixth Annual Disability Statistics Compendium.
- Presented by the Rehabilitation Research and Training Center on Disability Statistics and Demographics (StatsRRTC) at the University of New Hampshire.
- Funded by the National Institute on Disability and Rehabilitation Research (NIDRR).



Purpose of this Presentation

- Describe the purpose of the Compendium
- Highlight some of the patterns and trends
- Mention how to access the Compendium and technical assistance



Purpose of the Compendium

- To provide the disability community with a comprehensive set of statistics
 - Ready access
 - Up-to-date
 - Variety of topics and sources
 - Population (survey) and administrative statistics
 - Guide to existing sources of data and statistics
- Modeled after Statistical Abstracts of the U.S.



Design of the Compendium

- A comprehensive set of tables with descriptive summary pages
- Based on existing published statistics
- References to original sources with links
- Access to technical assistance via a toll-free number
- A particular focus on state-level statistics and national trends



Topics Covered

- Population size and prevalence
- Employment, wages/salary
- Poverty
- Veterans
- Health insurance coverage (Medicare, Medicaid)
- Health behaviors and other health statistics
- Supplemental Security Income, Social Security Disability Insurance
- Special education
- Vocational rehabilitation
- ⁶ • Federal government spending



Cautions

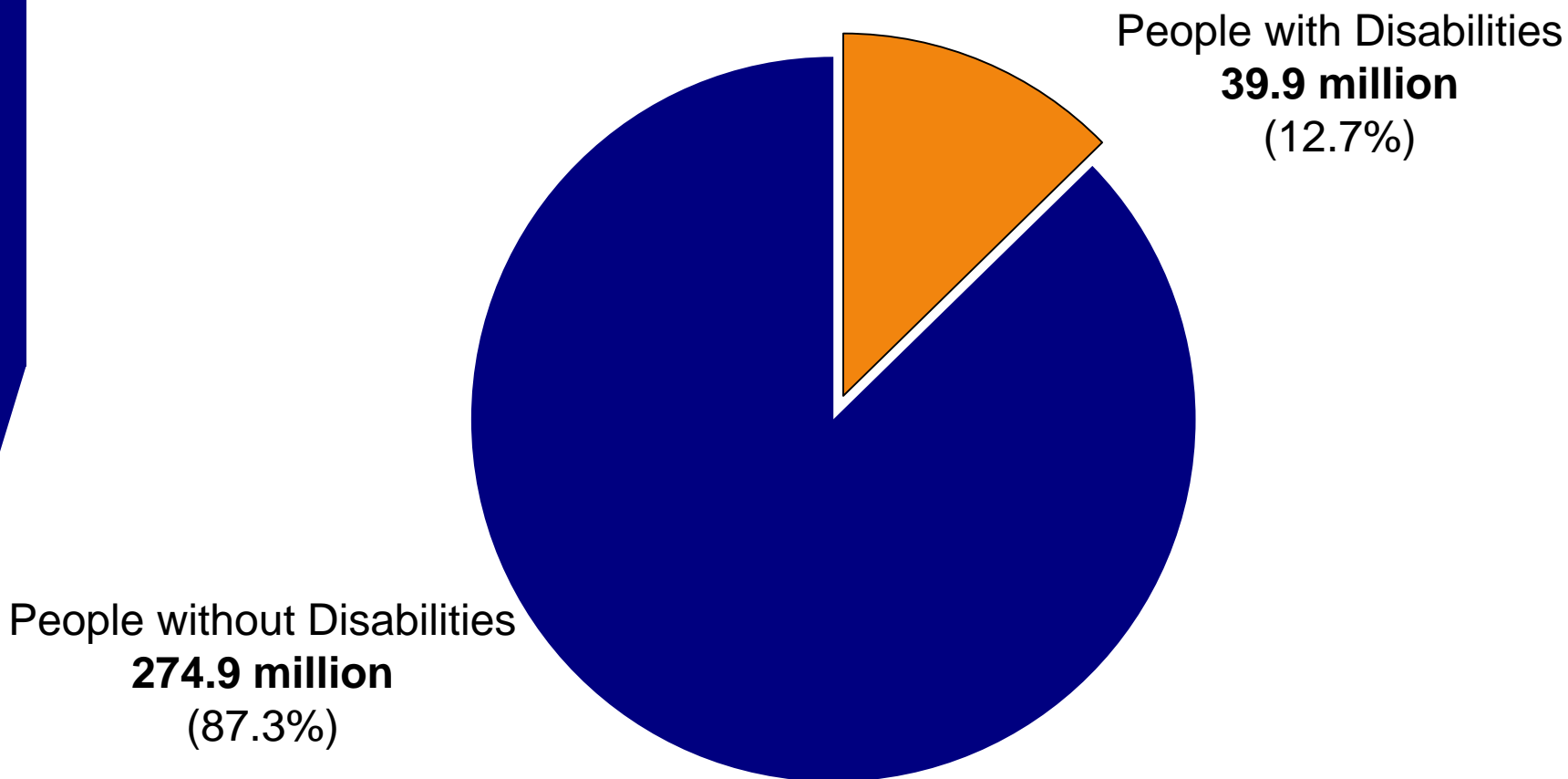
- Definition of Disability: The Compendium contains statistics from different data sources, which have different methods to identify people with disabilities.
 - See Glossary.
- Definition of Employment/Unemployment: such statistics are constructed in very specific ways.
 - See Glossary.



Population Size, 2013

Table 1.3

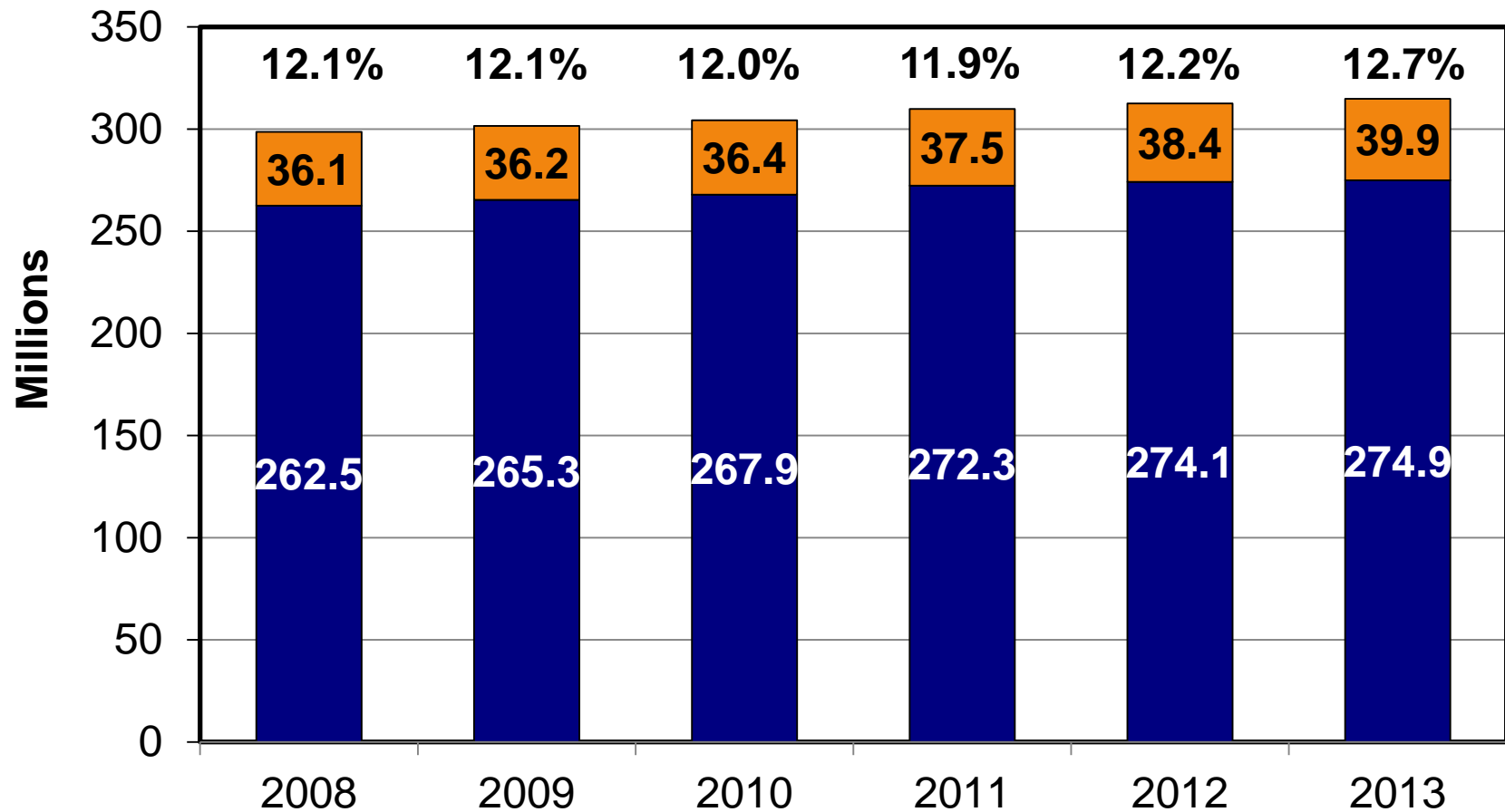
Civilians (Living in the Community)





Since 2008

Civilians (Living in the Community)

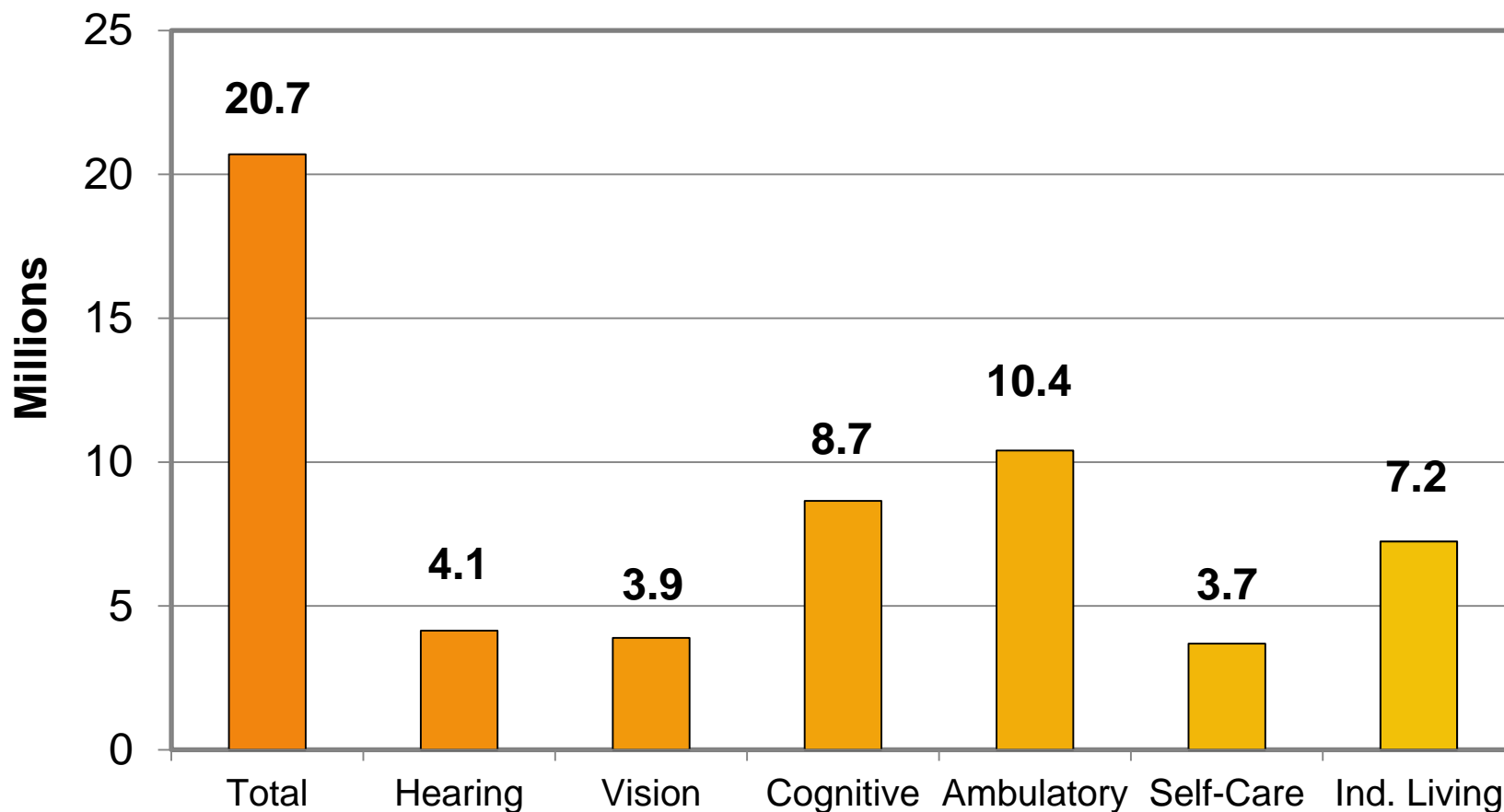




Numbers, by Disability Type, 2013

Tables 1.8-1.13

Civilians Ages 18-64 (Living in the Community)

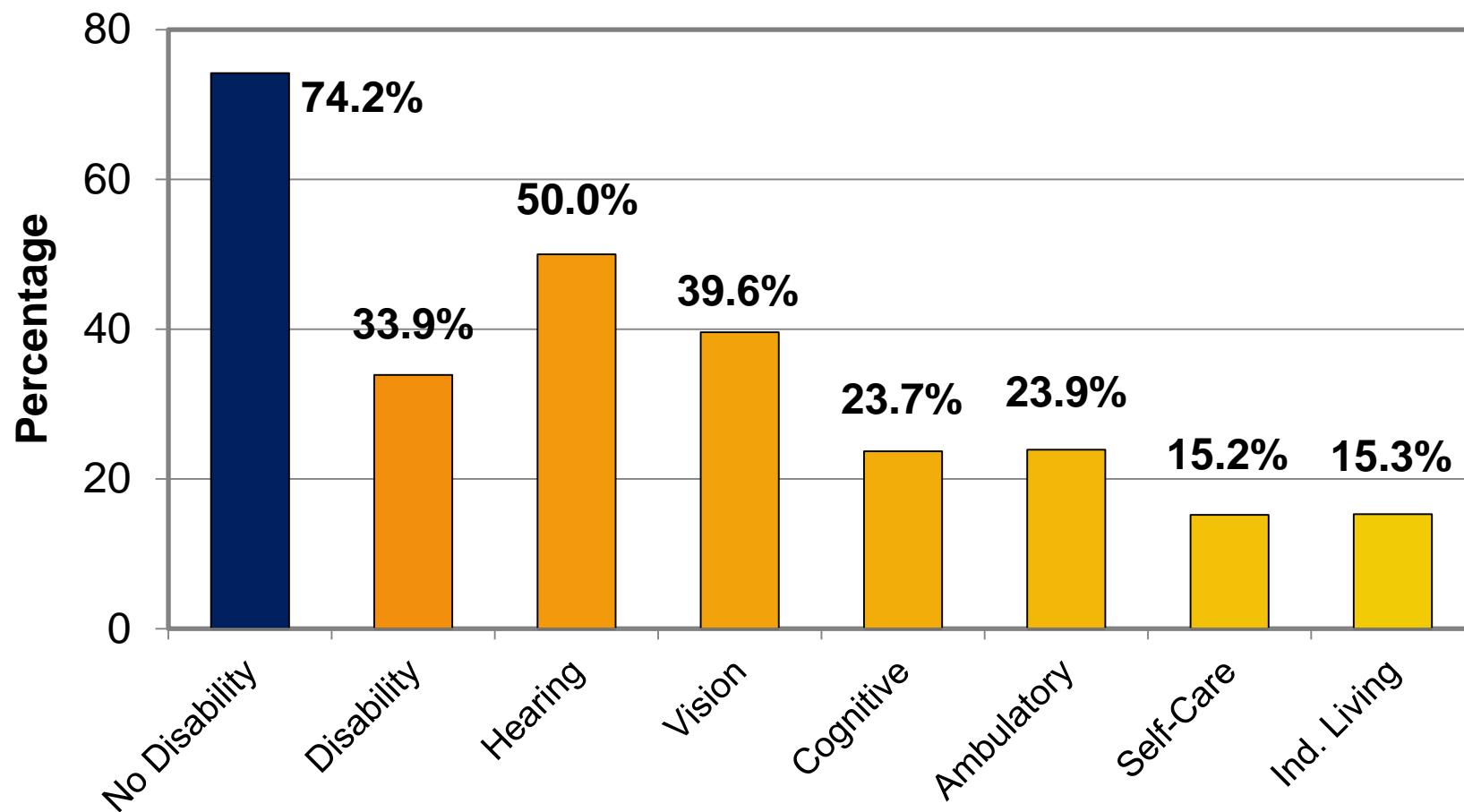




Employment Rate, 2013

Tables 2.1-2.8

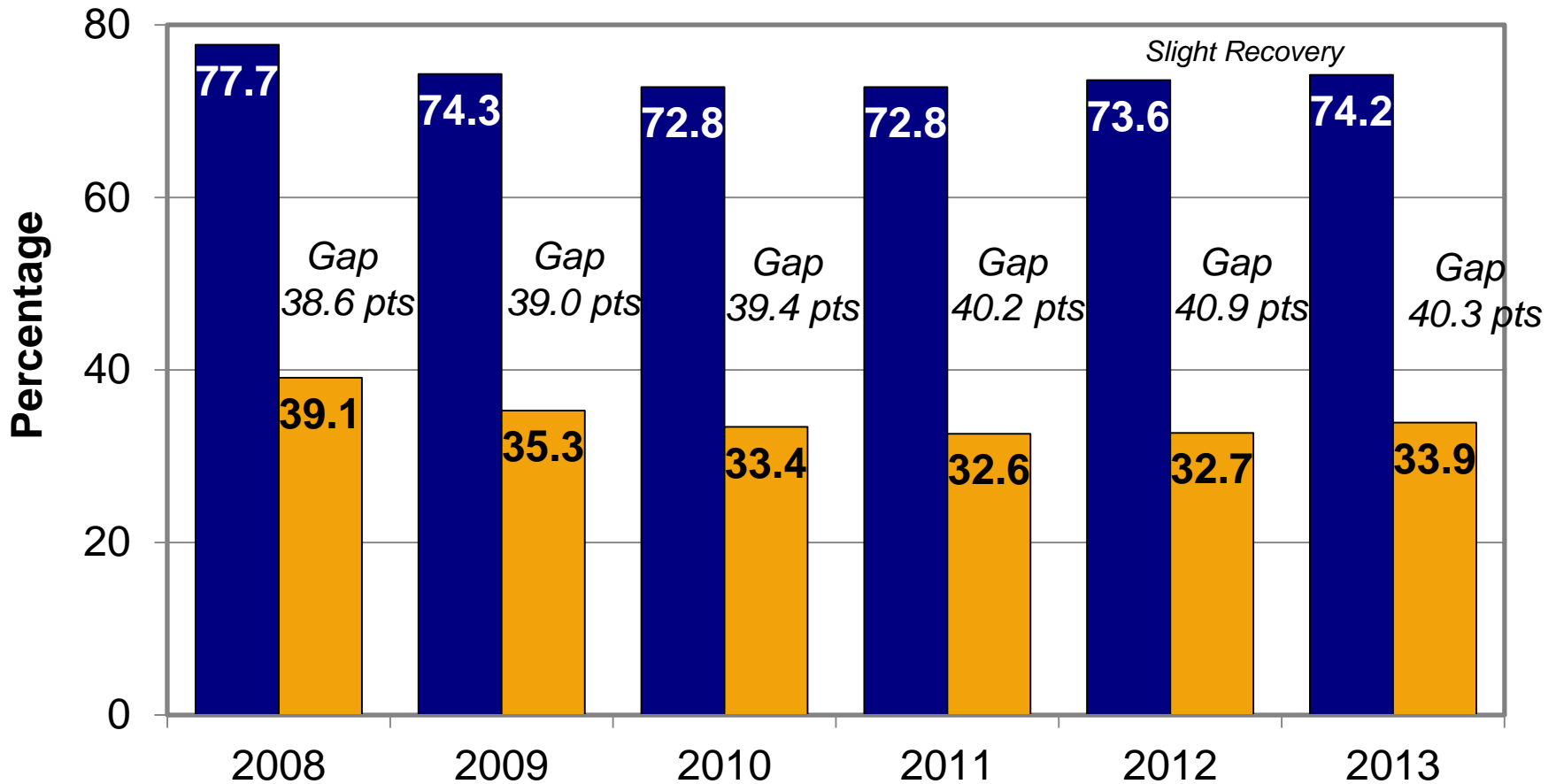
Civilians Ages 18-64 (Living in the Community)





Employment Rates, Since 2008

Civilians Ages 18-64 (Living in the Community)

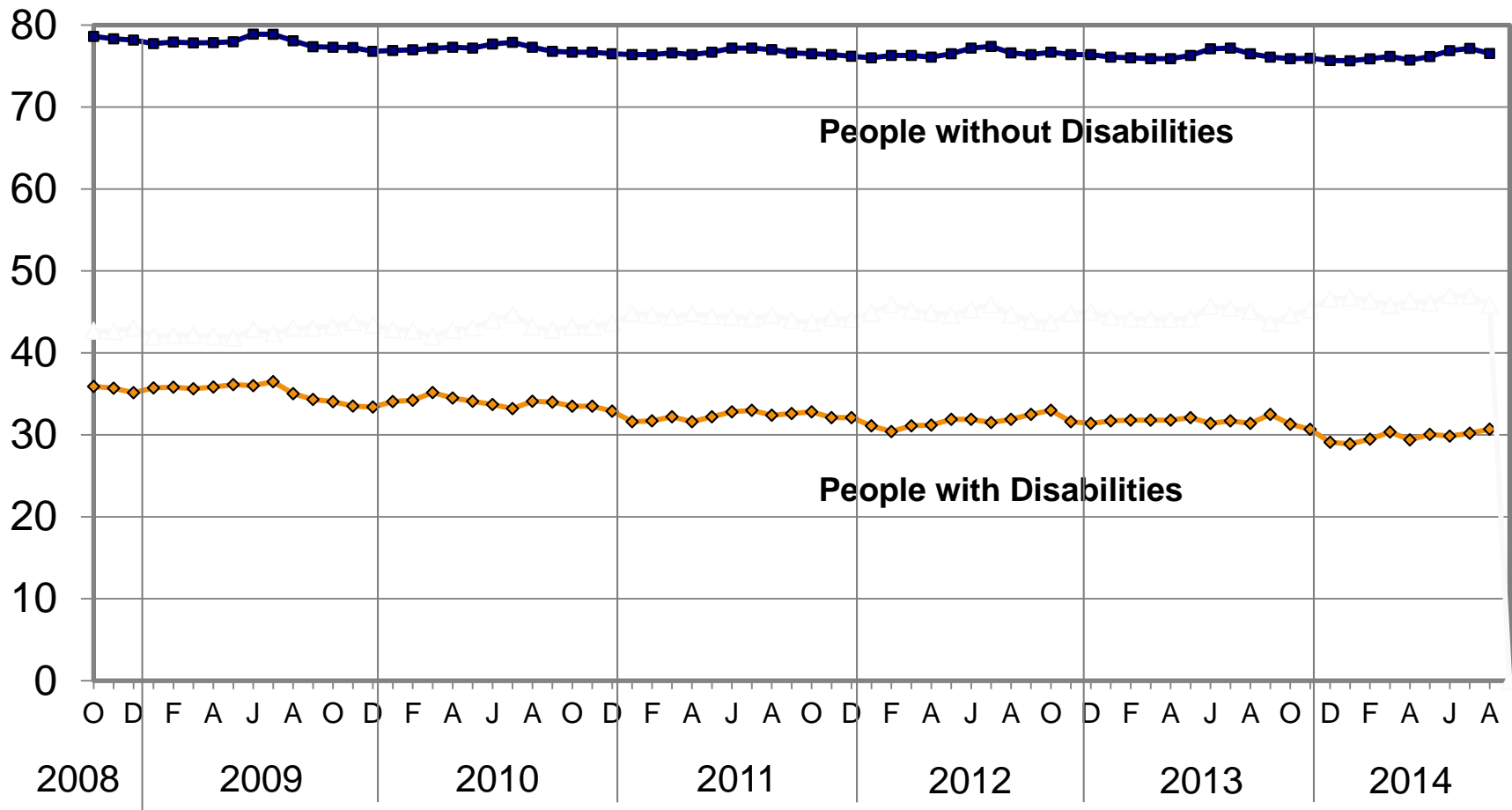




Trends in Labor Force Participation

Table 3.2

Civilians Ages 16-64



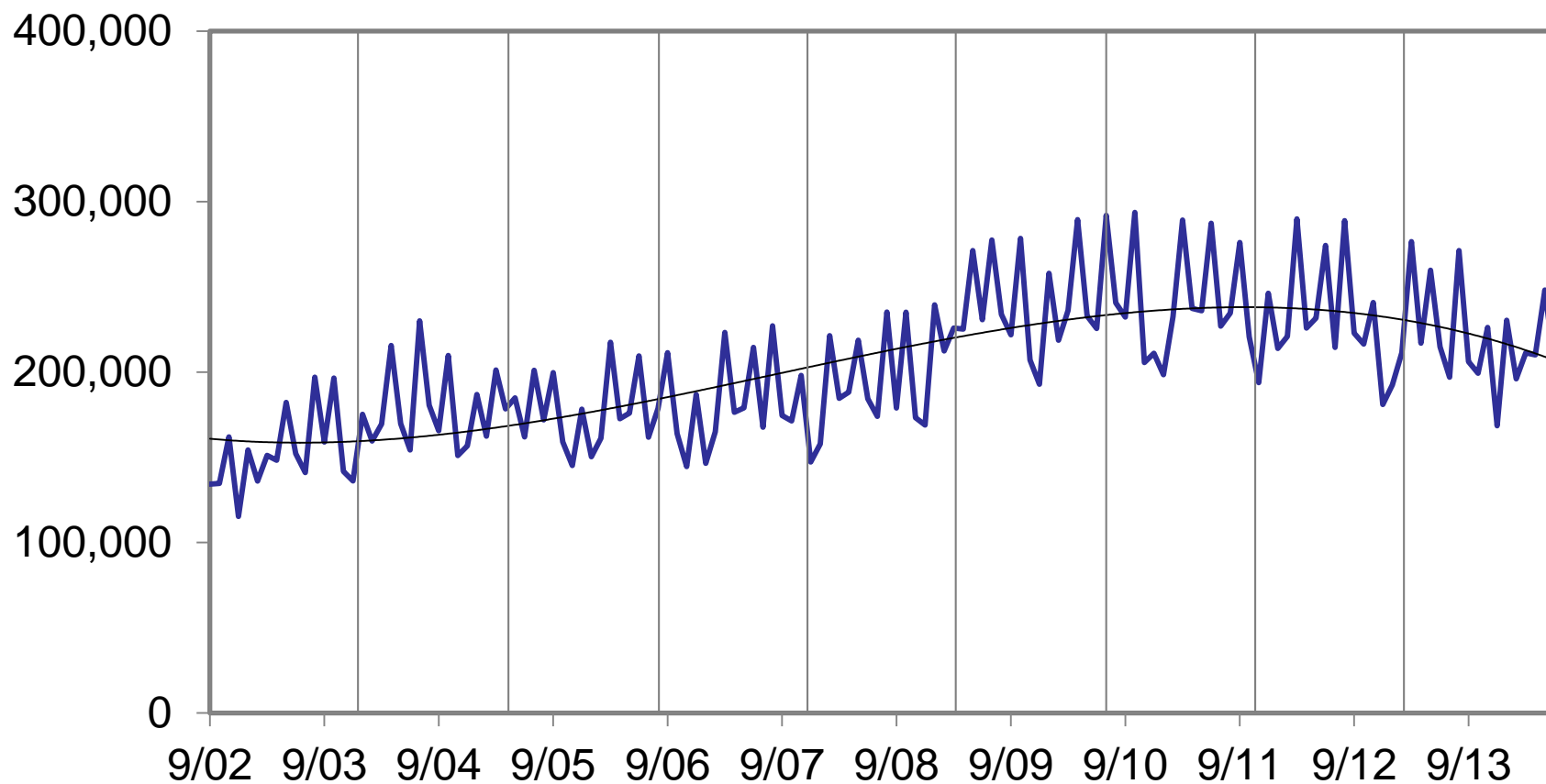
Source: Current Population Survey



Applications to SSDI

Table 9.10

Monthly Number of SSDI Applications





Other Things of Interest

- Monthly Statistics Update: Kessler/UNH *National Trends in Disability Employment* (nTIDE) Report

national Trends In Disability Employment:
Comparison of People With and Without Disabilities
(October 2013 and October 2014)



OCTOBER 2014	Labor Force Participation Rate		Employment-Population Ratio		Percent Looking	
	Oct '13	Oct '14	Oct '13	Oct '14	Oct '13	Oct '14
		31.3	30.9	26.9	27.1	4.4
	% change ↓ 1.3		% change ↑ 0.7		% change ↓ 13.6	
	75.9	76.5	70.7	72.4	5.2	4.1
	% change ↑ 0.8		% change ↑ 2.4		% change ↓ 20.8	

Source: Kessler Foundation/University of New Hampshire Institute on Disability

* PWD – People with disabilities; PWOD – People without disabilities



Other Things of Interest

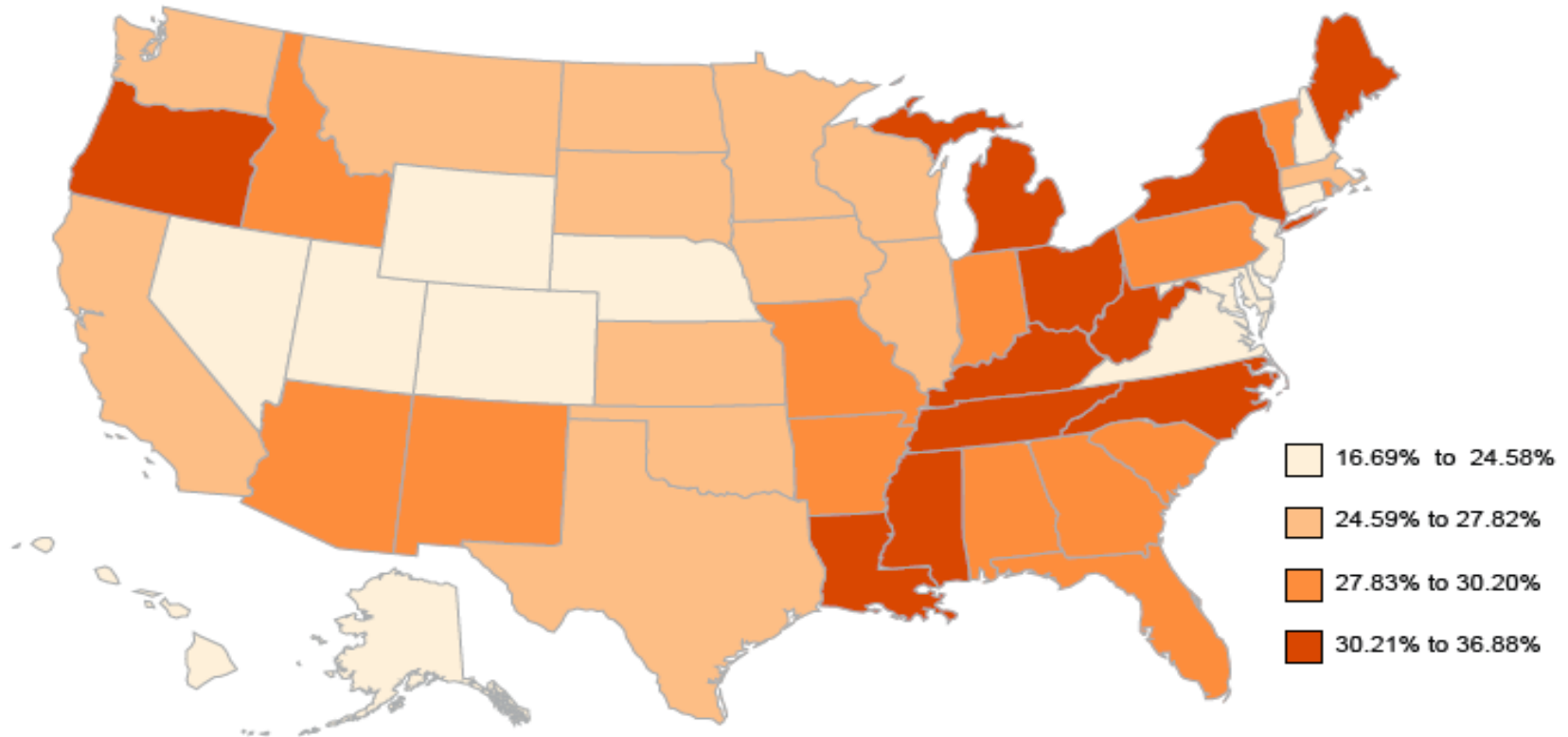
- Annual Report on Disability:
 - A “higher level” progress report
 - Synopsis of Compendium
 - Includes:
 - National trend charts
 - Maps to depict state differences in:
 - Prevalence
 - Employment and earnings
 - Health behaviors
 - Poverty





Annual Report on Disability

Poverty Rate, Civilians with Disabilities Ages 18-64, 2014



Source: U.S. Census Bureau, 2013 *American Community Survey*, American FactFinder, Table B18130; <http://factfinder2.census.gov>; 2014 *Annual Disability Statistics Compendium*, Table 4.1.



Accessing the Compendium

- www.DisabilityCompendium.org
 - Accessible pdf and accessible html
 - Limited print versions
- Technical assistance available at:
 - Our toll-free number: 866-538-9521
 - Relay: 711
 - E-mail: disability.statistics@unh.edu



Contact Information

Institute on Disability
University of New Hampshire
10 West Edge Drive, Suite 101
Durham, NH 03824

Andrew J. Houtenville, Ph.D.
(603) 862-4004

Andrew.Houtenville@unh.edu

Debra L. Brucker, Ph.D.
(603) 862-1643

Debra.Brucker@unh.edu